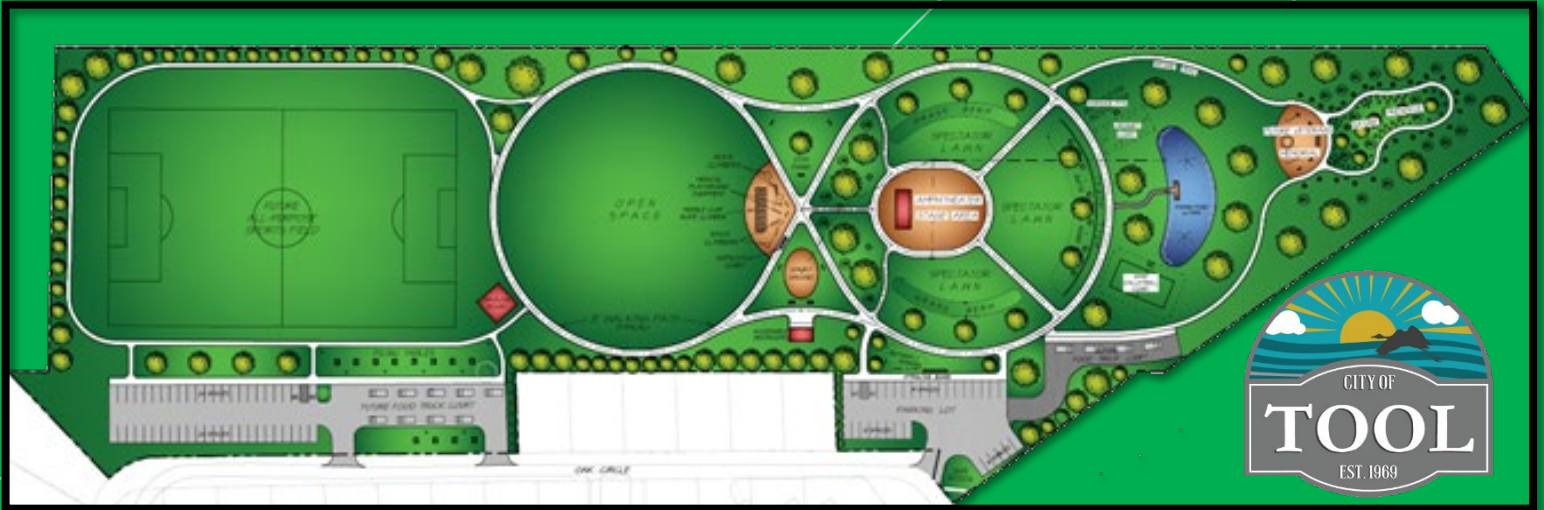


# Eight at Tool Park Proposal



## Park Details

### PARK ELEMENTS

- Pickle Ball Courts
- Kids Inclusive Play Area
- Walking Jogging Trail
- Amphitheater
- Dog Park
- Veteran's Memorial
- Fishing Pond
- Food Truck Court
- Botanical Garden

### PARK COST AND GRANT INFORMATION

- Total Budget is \$1.5 million
- Texas Parks and Wildlife Grant is a \$750,000 matching grant
- Matching Contribution is 50/50
- In-kind contributions & Bond Balance will go towards match
- Zero Tax Increase to Property Owners

### WHO WILL THE PARK SERVE

- Cedar Creek Lake Residents & Weekenders
- Persons with disabilities (ADA Compliant)
- Musicians & Entertainers
- Photographers
- Fitness Guru's
- Pets
- Artists

For more Information please visit:  
<https://www.tooltexas.org/tools-minutes/eight-at-tool/>