

CITY OF TOOL LANDSCAPE ASSISTANCE PROGRAM

The City of Tool has a new program to assist the citizens in need to maintain their property within the city limits of Tool. The City of Tool will pay one third to one half (1/3 to 1/2) the cost to mow, edge, weedeating properties, pick up trash, and remove brush or tree limbs. Each property must be approved by City Code Enforcement for this assistance. Please call the City of Tool Code Enforcement for details on this assistance. 903-432-3522 Ext 109. (subject to available funding)

While short grass and weeds may look nice, it is also an important way to prevent rodents, insects and stagnant water from developing as a result of overgrowth. When grass and weeds are maintained below 12 inches, our community not only looks better, but it's also cleaner and safer. (Ord. 96, passed 9-10-92.)

City Code – Chapter 91

It shall be unlawful for any person, firm or corporation who shall own or occupy any lot or lots in the city, to:

- **allow weeds exceeding twelve inches in height,**
- **rubbish,**
- **brush, or**
- **any other unsightly, objectionable, or unsanitary matter to accumulate or grow on said lot or lots.**

Land zoned for agriculture purposes is exempt from weed height.



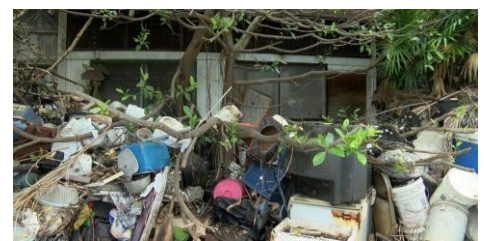
DO YOU KNOW • THE LAW?

Public Notice

A joint initiative with the City Code Enforcement and our citizens in need is in effect to give attention to areas within the city that have a concentration of tall weeds and grass.



The goal of this initiative is to be proactive and responsive to the needs of the citizens of Tool. Compliance ensures that City neighborhoods are clean and safe places to live, work, and play and can help reduce vandalism, deter crime, and maintain property values.



Enforcement

Applying for the program, each citizen must be approved by City Code Enforcement for this assistance. Please call the City of Tool Code Enforcement for details on this assistance.